



Trucks Entering Highway Warning System

The Trucks Entering Roadway Warning System provides motorists with real-time warnings of construction vehicles entering the highway, enabling them slow down and change course to avoid collision.

**Award winning safety
Remarkably Simple Setup
Lightning Fast Speed**

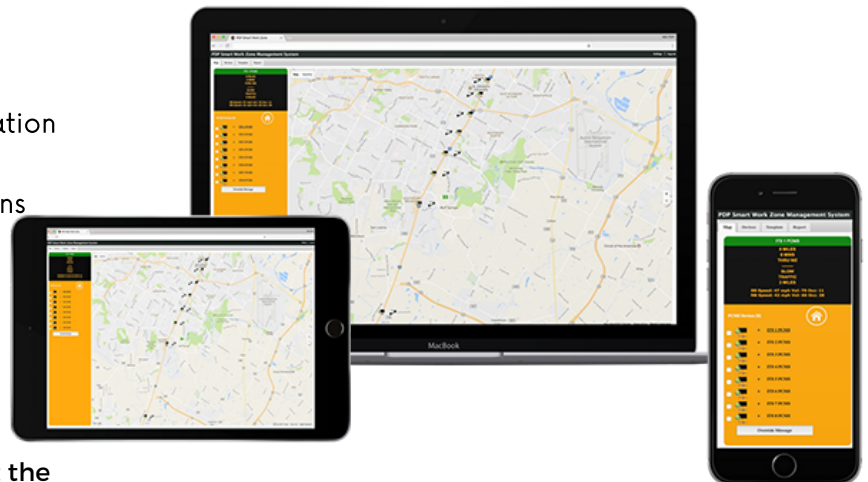
An Evolutionary Leap in ITS

- Lightning fast point-to-point communication warns motorists within milliseconds
- Touchscreen controller with intuitive icons
- Simple, One-Step Sensor Setup
- Non-intrusive detection
- Compact sensor allows easy pole or trailer mount

When slow-moving construction vehicles exit the work zone, fast-moving cars often don't have enough time to slow or change course, before colliding with the construction vehicle.

The Trucks Entering Roadway Warning System (TWS) helps prevent this type of accident. It activates real-time truck warnings on flashing beacon trailers, giving motorists time to slow down and avoid the work vehicle.

Seconds can mean everything when it comes to averting an accident. So, QLynx TWS units include near-instantaneous communication technology, allowing warnings to display within milliseconds. Messages display on Wanco® Fold-n-Go™ flashing beacon trailers, which include regulatory signage.



QLynx TWS integrates seamlessly with QLynx's award-winning web-based ITS systems.

Based on years of experience in the field, QLynx devices are designed to be portable, versatile, reliable, and hassle-free. Designed for low power use, and with built-in solar, no charging trips are required.

Technical Details

900 MHz point-to-point radio modem capable of transmitting signal in milliseconds

4G LTE Modem Standard

Automated solar charging for unlimited deployment length

2.8-in TFT Touchscreen for error-free setup

Wanco® Fold-n-Go™ flashing beacons with regulatory signage

ARM Cortex 168 MHz Processor



QLynxTech.com
404-803-5487
Sales@QLynxTech.com